

ANDE

Administración Nacional de Electricidad
Departamento de Estadísticas

COMPILACIÓN ESTADÍSTICA
1983 - 2006

INDICE

CAPÍTULOS	PÁG.
1. COMERCIALIZACIÓN	
<u>1.1 CONSUMO RESIDENCIAL</u>	3
<u>1.2 CONSUMO COMERCIAL</u>	5
<u>1.3 CONSUMO INDUSTRIAL</u>	7
<u>1.4 OTROS CONSUMOS</u>	9
<u>1.5 CONSUMO NACIONAL</u>	11
<u>1.6 TOTAL ENERGÍA VENDIDA</u>	13
<u>1.7 EXPORTACIÓN</u>	14
<u>1.8 CLIENTES CONECTADOS</u>	17
2. DISTRIBUCIÓN	
<u>2.1 LÍNEAS DE MEDIA TENSIÓN</u>	18
<u>2.2 LÍNEAS DE BAJA TENSIÓN</u>	20
<u>2.3 PUESTOS DE DISTRIBUCIÓN</u>	21
<u>2.4 ALUMBRADO PÚBLICO Y POTENCIA INSTALADA</u>	22
3. RECURSOS HUMANOS	
<u>3.1 DISTRIBUCIÓN DEL PERSONAL</u>	23
3.2 INDICES DE EFICIENCIA	
<u>3.2.1 ENERGÍA VENDIDA POR PERSONA EMPLEADA</u>	24
<u>3.2.2 CLIENTES SERVIDOS POR CADA EMPLEADO</u>	25
<u>3.2.3 KM DE LÍNEAS EN SERVICIO POR PERSONA EMPLEADA</u>	26
4. PRODUCCIÓN	
<u>4.1 ORIGEN DE LA ENERGÍA</u>	27


 IR A INDICE

C O M E R C I A L I Z A C I Ó N

CONSUMO RESIDENCIAL

Años	CAPITAL			INTERIOR			TOTAL		
	Consumo kWh	Clientes N°	kWh por cliente	Consumo kWh	Clientes N°	kWh por cliente	Consumo kWh	Clientes N°	kWh por cliente
1983	357.637.637	145.949	2.450	134.552.095	93.501	1.439	492.189.732	239.450	2.056
1984	389.101.974	154.782	2.514	151.601.249	104.638	1.449	540.703.223	259.420	2.084
1985	285.230.101	128.270	2.224	114.312.007	95.755	1.194	399.542.108	224.025	1.783
1986	323.261.624	133.113	2.428	137.966.072	107.380	1.285	461.227.696	240.493	1.918
1987	345.225.142	133.645	2.583	159.689.683	119.079	1.341	504.914.825	252.724	1.998
1988	377.018.686	137.456	2.743	189.664.087	132.997	1.426	566.682.773	270.453	2.095
1989	370.378.119	139.568	2.654	210.403.053	151.557	1.388	580.781.172	291.125	1.995
1990	431.327.862	148.397	2.907	254.300.022	168.428	1.510	685.627.884	316.825	2.164
1991	466.780.305	153.205	3.047	312.215.983	194.198	1.608	778.996.288	347.403	2.242
1992	525.263.829	161.146	3.260	377.931.547	222.139	1.701	903.195.376	383.285	2.356
1993	617.477.631	170.034	3.631	474.508.222	266.864	1.778	1.091.985.853	436.898	2.499
1994	654.944.164	177.528	3.689	582.358.900	323.785	1.799	1.237.303.064	501.313	2.468
1995	726.922.141	185.857	3.911	717.992.483	393.834	1.823	1.444.914.624	579.691	2.493
1996	777.486.112	195.253	3.982	812.881.732	451.787	1.799	1.590.367.844	647.040	2.458
1997	832.985.324	203.277	4.098	889.178.356	503.902	1.765	1.722.163.680	707.179	2.435
1998	840.363.231	209.815	4.005	941.659.571	539.218	1.746	1.782.022.802	749.033	2.379
1999	928.079.855	252.448	3.676	975.567.212	466.711	2.090	1.903.647.067	719.159	2.647
2000	1.032.375.054	262.488	3.933	993.069.675	513.559	1.934	2.025.444.729	776.047	2.610
2001	1.039.400.690	275.533	3.772	979.809.706	537.431	1.823	2.019.210.396	812.964	2.484

Departamento de Estadísticas

Compilación Estadística

Comercialización/saff

2002	1.005.643.762	273.645	3.675	925.600.637	546.048	1.695	1.931.244.399	819.693	2.356
2003	929.700.564	277.326	3.352	857.998.342	557.875	1.538	1.787.698.906	835.201	2.140
2004	937.634.980	267.264	3.508	899.060.279	519.137	1.732	1.836.695.259	786.401	2.336
2005	989.456.954	275.597	3.590	948.199.122	595.937	1.591	1.937.656.076	871.534	2.223
2006	1.065.775.158	294.678	3.617	1.031.210.774	628.610	1.640	2.096.985.932	923.288	2.271



**CONSUMO COMERCIAL**

Años	CAPITAL			INTERIOR			TOTAL		
	Consumo kWh	Clientes N°	kWh por cliente	Consumo kWh	Clientes N°	kWh por cliente	Consumo kWh	Clientes N°	kWh por cliente
1985	114.907.284	19.769	5.812	51.257.670	15.646	3.276	166.164.954	35.415	4.692
1986	117.725.519	20.684	5.692	58.555.586	17.302	3.384	176.281.105	37.986	4.641
1987	128.174.591	22.275	5.754	68.788.849	21.230	3.240	196.963.440	43.505	4.527
1988	144.811.859	24.387	5.938	87.642.388	24.621	3.560	232.454.247	49.008	4.743
1989	147.674.041	25.384	5.818	95.196.227	27.574	3.452	242.870.268	52.958	4.586
1990	169.302.516	26.508	6.387	111.932.907	30.453	3.676	281.235.423	56.961	4.937
1991	188.086.585	28.412	6.620	131.019.332	34.036	3.849	319.105.917	62.448	5.110
1992	210.494.621	30.280	6.952	146.426.452	37.714	3.883	356.921.073	67.994	5.249
1993	249.132.668	31.881	7.814	173.838.979	41.237	4.216	422.971.647	73.118	5.785
1994	307.092.937	44.246	6.941	222.537.936	53.088	4.192	529.630.873	97.334	5.441
1995	381.003.736	46.548	8.185	268.269.771	57.534	4.663	649.273.507	104.082	6.238
1996	410.027.473	48.494	8.455	287.275.581	61.216	4.693	697.303.054	109.710	6.356
1997	447.836.769	48.976	9.144	305.108.467	63.873	4.777	752.945.236	112.849	6.672
1998	461.584.570	49.464	9.332	320.165.185	66.137	4.841	781.749.755	115.601	6.762
1999	484.422.401	50.338	9.623	336.211.507	58.562	5.741	820.633.908	108.900	7.536
2000	497.895.903	49.515	10.055	350.183.725	61.836	5.663	848.079.628	111.351	7.616
2001	532.730.509	49.178	10.833	354.435.097	61.951	5.721	887.165.606	111.129	7.983

2002	530.724.572	47.504	11.172	339.063.468	62.045	5.465	869.788.040	109.549	7.940
2003	495.966.881	46.286	10.715	317.549.318	61.727	5.144	813.516.199	108.013	7.532
2004	489.255.828	42.332	11.558	323.496.256	55.203	5.860	812.752.084	97.535	8.333
2005	535.109.926	46.560	11.493	348.940.131	53.120	6.569	884.050.057	99.680	8.869
2006	578.522.212	46.961	12.319	384.730.764	62.226	6.183	963.252.976	109.187	8.822

A partir de 1985, se crea la Categoría Comercial.



**CONSUMO INDUSTRIAL**

Años	CAPITAL			INTERIOR			TOTAL		
	Consumo kWh	Clientes N°	kWh por cliente	Consumo kWh	Clientes N°	kWh por cliente	Consumo kWh	Clientes N°	kWh por cliente
1983	141.467.889	701	201.809	111.153.071	878	126.598	252.620.960	1.579	159.988
1984	155.114.731	659	235.379	130.996.674	961	136.313	286.111.405	1.620	176.612
1985	80.090.496	1.843	43.457	123.861.824	1.486	83.353	203.952.320	3.329	61.265
1986	96.568.856	1.837	52.569	115.354.460	1.654	69.743	211.923.316	3.491	60.706
1987	135.938.025	1.845	73.679	190.298.657	2.017	94.347	326.236.682	3.862	84.474
1988	121.720.725	1.874	64.952	271.231.401	2.461	110.212	392.952.126	4.335	90.646
1989	160.637.149	1.882	85.354	289.930.260	2.894	100.183	450.567.409	4.776	94.340
1990	186.167.382	1.951	95.422	303.023.876	3.252	93.181	489.191.258	5.203	94.021
1991	161.162.410	2.037	79.118	354.787.301	3.715	95.501	515.949.711	5.752	89.699
1992	164.017.879	2.130	77.004	414.157.257	4.208	98.421	578.175.136	6.338	91.224
1993	169.547.399	2.206	76.857	458.255.526	4.577	100.121	627.802.925	6.783	92.555
1994	193.631.812	2.349	82.432	504.087.260	5.141	98.052	697.719.072	7.490	93.153
1995	198.702.786	2.512	79.101	599.632.850	5.667	105.811	798.335.636	8.179	97.608
1996	215.483.114	2.574	83.715	552.319.375	5.926	93.203	767.802.489	8.500	90.330
1997	216.658.768	2.596	83.459	545.051.103	6.214	87.713	761.709.871	8.810	86.460
1998	216.859.532	2.636	82.268	565.271.467	6.410	88.186	782.130.999	9.046	86.462
1999	248.662.918	2.634	94.405	670.489.207	5.755	116.506	919.152.125	8.389	109.566

2000	329.527.255	3.047	108.148	548.338.551	9.064	60.496	877.865.806	12.111	72.485
2001	361.882.473	3.082	117.418	554.882.836	9.453	58.699	916.765.309	12.535	73.136
2002	349.206.354	2.977	117.301	575.751.274	9.253	62.223	924.957.628	12.230	75.630
2003	375.460.638	3.132	119.879	675.680.047	9.652	70.004	1.051.140.685	12.784	82.223
2004	425.679.636	3.017	141.094	725.122.553	9.452	76.716	1.150.802.189	12.469	92.293
2005	499.433.987	2.304	216.768	747.342.065	9.359	79.853	1.246.776.052	11.663	106.900
2006	558.811.157	3.392	164.744	810.493.586	10.997	73.701	1.369.304.743	14.389	95.163





OTROS CONSUMOS

Años	CAPITAL			INTERIOR			TOTAL		
	Consumo kWh	Clientes N°	kWh por cliente	Consumo kWh	Clientes N°	kWh por cliente	Consumo kWh	Clientes N°	kWh por cliente
1983	47.657.381	727	65.553	27.215.069	374	72.768	74.872.450	1.101	68.004
1984	51.794.588	723	71.638	28.717.511	426	67.412	80.512.099	1.149	70.071
1985	152.287.446	10.369	14.687	77.959.295	6.146	12.685	230.246.741	16.515	13.942
1986	163.639.928	10.941	14.957	96.908.431	6.758	14.340	260.548.359	17.699	14.721
1987	181.533.731	12.599	14.409	106.184.764	7.785	13.640	287.718.495	20.384	14.115
1988	191.038.151	14.132	13.518	126.571.385	8.877	14.258	317.609.536	23.009	13.804
1989	196.651.851	15.243	12.901	135.762.849	10.137	13.393	332.414.700	25.380	13.098
1990	222.221.476	16.236	13.687	148.741.876	11.191	13.291	370.963.352	27.427	13.525
1991	250.037.718	17.039	14.674	164.785.709	12.461	13.224	414.823.427	29.500	14.062
1992	267.964.970	16.272	16.468	180.235.023	13.211	13.643	448.199.993	29.483	15.202
1993	293.277.576	16.940	17.313	207.357.837	14.919	13.899	500.635.413	31.859	15.714
1994	286.009.303	7.540	37.932	210.780.427	8.764	24.051	496.789.730	16.304	30.470
1995	263.398.401	7.940	33.174	219.646.636	10.295	21.335	483.045.037	18.235	26.490
1996	268.218.169	8.191	32.745	258.359.036	11.838	21.825	526.577.205	20.029	26.291
1997	307.268.971	8.364	36.737	281.178.342	13.744	20.458	588.447.313	22.108	26.617
1998	309.704.064	8.617	35.941	289.933.405	15.196	19.080	599.637.469	23.813	25.181
1999	348.321.344	9.512	36.619	314.870.177	13.806	22.807	663.191.521	23.318	28.441

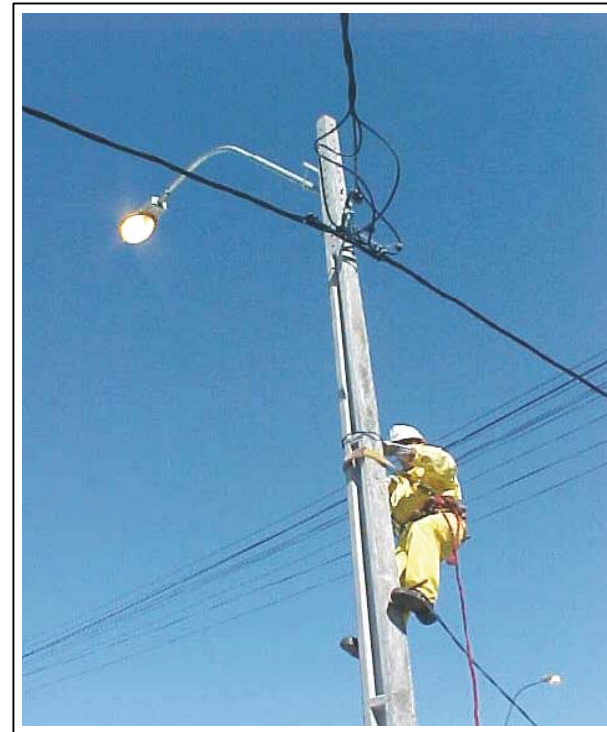
2000	412.260.443	9.414	43.792	282.932.115	12.405	22.808	695.192.558	21.819	31.862
2001	368.394.947	9.491	38.815	307.716.664	13.460	22.862	676.111.611	22.951	29.459
2002	373.090.915	9.329	39.993	301.667.940	13.647	22.105	674.758.855	22.976	29.368
2003	377.874.734	8.224	45.948	281.156.992	12.056	23.321	659.031.726	20.280	32.497
2004	364.968.388	8.361	43.651	266.153.578	12.810	20.777	631.121.966	21.171	29.811
2005	394.976.163	9.473	41.695	273.537.504	14.300	19.128	668.513.667	23.773	28.121




 IR A INDICE
CONSUMO NACIONAL

Años	CAPITAL			INTERIOR			TOTAL		
	Consumo kWh	Clientes N°	kWh por cliente	Consumo kWh	Clientes N°	kWh por cliente	Consumo kWh	Clientes N°	kWh por cliente
1983	546.762.907	147.377	3.710	280.461.778	94.754	2.960	827.224.685	242.131	3.416
1984	596.011.293	156.164	3.817	311.315.434	106.025	2.936	907.326.727	262.189	3.461
1985	632.515.327	160.251	3.947	367.390.796	119.033	3.086	999.906.123	279.284	3.580
1986	701.195.927	166.575	4.209	408.784.549	133.094	3.071	1.109.980.476	299.669	3.704
1987	790.871.489	170.364	4.642	524.961.953	150.111	3.497	1.315.833.442	320.475	4.106
1988	834.589.421	177.849	4.693	745.333.860	168.957	4.411	1.579.923.281	346.806	4.556
1989	875.341.160	182.077	4.808	731.292.389	192.162	3.806	1.606.633.549	374.239	4.293
1990	1.009.019.236	193.092	5.226	817.998.681	213.324	3.835	1.827.017.917	406.416	4.495
1991	1.066.067.018	200.693	5.312	962.808.325	244.410	3.939	2.028.875.343	445.103	4.558
1992	1.167.741.299	209.828	5.565	1.118.750.279	277.272	4.035	2.286.491.578	487.100	4.694
1993	1.329.435.274	221.061	6.014	1.313.960.564	327.597	4.011	2.643.395.838	548.658	4.818
1994	1.441.678.216	231.663	6.223	1.519.764.523	390.778	3.889	2.961.442.739	622.441	4.758
1995	1.570.027.064	242.857	6.465	1.805.541.740	467.330	3.864	3.375.568.804	710.187	4.753
1996	1.671.214.868	254.512	6.566	1.910.835.724	530.767	3.600	3.582.050.592	785.279	4.562
1997	1.804.749.832	263.213	6.857	2.020.516.268	587.733	3.438	3.825.266.100	850.946	4.495
1998	1.828.511.397	270.532	6.759	2.117.029.628	626.961	3.377	3.945.541.025	897.493	4.396
1999	2.009.486.518	314.932	6.381	2.297.138.103	544.834	4.216	4.306.624.621	859.766	5.009

2000	2.272.058.655	324.464	7.002	2.174.524.066	596.864	3.643	4.446.582.721	921.328	4.826
2001	2.302.408.619	337.284	6.826	2.196.844.303	622.295	3.530	4.499.252.922	959.579	4.689
2002	2.258.665.603	333.455	6.774	2.142.083.319	630.993	3.395	4.400.748.922	964.448	4.563
2003	2.179.002.817	334.968	6.505	2.132.384.699	641.310	3.325	4.311.387.516	976.278	4.416
2004	2.217.538.832	320.974	6.909	2.213.832.666	596.602	3.711	4.431.371.498	917.576	4.829
2005	2.418.977.030	333.934	7.244	2.318.018.822	672.716	3.446	4.736.995.852	1.006.650	4.706
2006	2.606.514.632	354.633	7.350	2.515.090.357	718.207	3.502	5.121.604.989	1.072.840	4.774





TOTAL ENERGÍA VENDIDA

Años	TOTAL		
	Consumo kWh	Clientes N°	kWh por cliente
1983	846.937.882	242.132	3.498
1984	933.234.348	262.190	3.559
1985	1.031.969.616	279.285	3.695
1986	1.134.529.616	299.670	3.786
1987	1.457.853.661	320.477	4.549
1988	1.818.308.731	346.808	5.243
1989	1.867.202.635	374.242	4.989
1990	2.042.234.993	406.419	5.025
1991	2.175.214.257	445.105	4.887
1992	2.398.712.823	487.102	4.924
1993	2.757.928.982	548.660	5.027
1994	3.140.874.443	622.444	5.046
1995	3.605.894.515	710.269	5.077
1996	3.791.966.915	785.372	4.828
1997	3.973.477.997	851.043	4.669
1998	4.079.504.871	897.591	4.545
1999	4.815.296.785	859.863	5.600
2000	5.071.117.642	921.445	5.503
2001	5.141.966.973	959.702	5.358
2002	5.077.347.292	964.548	5.264
2003	4.935.200.332	976.393	5.055
2004	5.169.817.208	917.692	5.633
2005	5.160.787.725	1.006.763	5.126
2006	5.852.750.984	1.072.955	5.455



ITAIPÚ - ERIDAY - EXPORTACIÓN

Años	Itaipú	EMSA,COPEL, AGUA Y ENERGÍA	ERIDAY (Yacyretá)	TOTAL
	Consumo kWh	Consumo kWh	Consumo kWh	Consumo kWh
1983	19.713.197	---	---	19.713.197
1984	25.907.621	---	---	25.907.621
1985	32.063.493	---	---	32.063.493
1986	24.549.140	---	---	24.549.140
1987	115.529.402	26.490.817	---	142.020.219
1988	19.251.592	219.133.858	---	238.385.450
1989	14.306.539	157.571.186	88.691.361	260.569.086
1990	4.695.600	129.690.785	80.830.691	215.217.076
1991	---	85.269.540	61.069.374	146.338.914
1992	---	59.113.122	53.108.123	112.221.245
1993	---	50.380.812	64.152.332	114.533.144
1994	---	111.900.816	67.530.888	179.431.704
1995	---	161.378.126	64.318.231	225.696.357
1996	---	159.369.869	48.014.341	207.384.210
1997	---	109.852.347	35.814.181	145.666.528
1998	---	102.818.400	28.577.074	131.395.474
1999	---	484.892.600	20.857.478	505.750.078
2000	---	608.464.562	12.925.443	621.390.005
2001	---	636.287.212	3.144.713	639.431.925
2002	---	667.161.600	6.392.369	673.553.969
2003	---	617.475.812	3.290.871	620.766.683
2004	---	732.379.668	2.931.074	735.310.742
2005	---	417.117.143	2.888.693	420.005.836
2006	---	725.645.545	2.080.324	727.725.869


 IR A INDICE

CANTIDAD DE CLIENTES CONECTADOS

Años	Conexiones Netas en el año	Total de Clientes	VARIACIÓN PORCENTUAL	
			Anual (%)	Acumulada (%)
1983	16.829	245.187	---	---
1984	16.954	262.141	6,91	6,91
1985	17.096	279.237	6,52	13,89
1986	24.827	304.064	8,89	24,01
1987	20.175	324.239	6,64	32,24
1988	22.568	346.807	6,96	41,45
1989	27.434	374.241	7,91	52,63
1990	32.178	406.419	8,60	65,76
1991	38.627	445.046	9,50	81,51
1992	46.107	491.153	10,36	100,32
1993	60.298	551.451	12,28	124,91
1994	71.533	622.984	12,97	154,09
1995	87.218	710.202	14,00	189,66
1996	73.510	783.712	10,35	219,64
1997	65.856	849.568	8,40	246,50
1998	50.553	900.121	5,95	267,12
1999	39.649	939.770	4,40	283,29
2000	24.045	939.770	0,00	283,29
2001	25.064	1.006.337	7,08	310,44
2002(*)	4.891	1.011.228	0,49	312,43
2003	214	1.011.442	0,02	312,52
2004	27.310	1.038.752	2,70	323,66
2005	50.742	1.089.494	4,88	344,35
2006	55.226	1.144.720	5,07	366,88

(*) Incluye ajustes efectuados a consecuencia del cambio del sistema informático.


 IR A INDICE

OBRAS DE DISTRIBUCIÓN

RED DE MEDIA TENSIÓN (ACUMULADO)

Años	Red de Media Tensión Aérea Capital (km)	Red de Media Tensión Aérea Interior (km)	Red de Media Tensión Aérea Total (km)	Red de Media Tensión Subterránea Capital (km)	Red de Media Tensión Subterránea Interior (km)	Red de Media Tensión Subterránea Total (km)	Total Red de Media Tensión (km)
1983	622,20	2.295,20	2.917,40	250,80	---	250,80	3.168,20
1984	651,80	2.777,90	3.429,70	260,10	---	260,10	3.689,80
1985	675,10	3.258,80	3.933,90	270,10	---	270,10	4.204,00
1986	698,80	3.678,00	4.376,80	274,70	0,20	274,90	4.651,70
1987	735,10	4.155,80	4.890,90	305,60	1,10	306,70	5.197,60
1988	776,50	4.674,80	5.451,30	318,50	4,20	322,70	5.774,00
1989	811,60	4.963,40	5.775,00	320,30	5,40	325,70	6.100,70
1990	835,50	5.422,00	6.257,50	323,50	6,00	329,50	6.587,00
1991	899,00	5.931,00	6.830,00	329,35	8,00	337,35	7.167,35
1992	967,30	6.834,40	7.801,70	331,99	13,90	345,89	8.147,59
1993	1.073,10	8.893,60	9.966,70	336,30	16,70	353,00	10.319,70
1994	1.132,70	10.609,40	11.742,10	338,00	17,10	355,10	12.097,20
1995	1.264,15	15.169,92	16.434,07	341,07	18,19	359,26	16.793,33
1996	1.355,45	18.457,68	19.813,13	345,20	18,71	363,91	20.177,04
1997	1.509,15	21.539,97	23.049,12	349,94	19,91	369,85	23.418,97
1998	1.727,89	22.715,07	24.442,96	359,16	23,39	382,55	24.825,51
1999	1.912,99	23.771,12	25.684,11	367,45	23,71	391,16	26.075,27

2000	1.993,08	24.495,46	26.488,54	369,40	25,04	394,44	26.882,98
2001	2.033,56	25.194,05	27.227,61	371,38	25,27	396,65	27.624,26
2002	2.063,92	25.600,76	27.664,68	381,22	25,82	407,04	28.071,72
2003	2.148,23	26.086,12	28.234,35	381,86	25,82	407,68	28.642,03
2004	2.192,48	26.411,05	28.603,53	382,86	26,12	408,98	29.012,51
2005	2.220,23	26.676,15	28.896,38	384,04	26,12	410,16	29.306,54
2006	2.287,73	26.946,00	29.233,73	400,41	26,12	426,53	29.660,26




 IR A INDICE

RED DE BAJA TENSIÓN

Años	Red de Baja Tensión Aérea Capital (km)	Red de Baja Tensión Aérea Interior (km)	Red de Baja Tensión Aérea Total (km)	Red de Baja Tensión Subterránea Capital (km)	Red de Baja Tensión Subterránea Interior (km)	Red de Baja Tensión Subterránea Total (km)	Total Red de Baja Tensión (km)
1983	2.075,90	2.444,10	4.520,00	---	---	0,00	4.520,00
1984	2.173,80	2.792,70	4.966,50	---	---	0,00	4.966,50
1985	2.233,40	3.093,80	5.327,20	2,20	---	2,20	5.329,40
1986	2.279,50	3.494,70	5.774,20	4,00	1,00	5,00	5.779,20
1987	2.342,30	3.839,20	6.181,50	5,70	1,30	7,00	6.188,50
1988	2.415,10	4.221,70	6.636,80	6,00	2,30	8,30	6.645,10
1989	2.476,20	4.464,50	6.940,70	8,50	3,20	11,70	6.952,40
1990	2.540,60	4.917,00	7.457,60	8,90	3,20	12,10	7.469,70
1991	2.681,92	5.338,00	8.019,92	9,10	3,30	12,40	8.032,32
1992	2.875,53	6.093,60	8.969,13	10,10	3,30	13,40	8.982,53
1993	3.147,40	7.750,40	10.897,80	11,30	3,30	14,60	10.912,40
1994	3.334,10	9.329,80	12.663,90	11,40	3,30	14,70	12.678,60
1995	3.589,78	13.016,98	16.606,76	12,15	3,30	15,45	16.622,21
1996	3.800,53	15.956,92	19.757,45	14,05	3,49	17,54	19.774,99
1997	4.089,52	18.363,44	22.452,96	16,09	4,73	20,82	22.473,78
1998	4.391,37	19.182,12	23.573,49	18,41	4,73	23,14	23.596,63
1999	4.528,67	20.009,21	24.537,88	19,88	4,73	24,61	24.562,49
2000	4.641,55	20.527,21	25.168,76	20,55	4,73	25,28	25.194,04
2001	4.765,00	21.130,74	25.895,74	21,76	4,73	26,49	25.922,23
2002	4.843,72	21.501,96	26.345,68	22,21	4,73	26,94	26.372,62
2003	4.919,08	21.953,55	26.872,63	22,24	4,73	26,97	26.899,60
2004	4.977,88	22.182,99	27.160,87	22,41	4,73	27,14	27.188,01
2005	5.051,31	22.460,28	27.511,59	22,70	4,73	27,43	27.539,02
2006	5.132,45	22.806,52	27.938,97	23,49	5,15	28,64	27.967,61


 IR A INDICE

PUESTOS DE DISTRIBUCIÓN (Acumulado)

Años	Puestos de Distribución Aéreos Capital (N°)	Puestos de Distribución Aéreos Interior (N°)	Puestos de Distribución Aéreos Total (N°)	Puestos de Distribución a Nivel Capital (N°)	Puestos de Distribución a Nivel Interior (N°)	Puestos de Distribución a Nivel Total (N°)	Total Puestos de Distribución (N°)
1983	1.873	1.652	3.525	456	191	647	4.172
1984	2.080	1.966	4.046	482	212	694	4.740
1985	2.289	2.510	4.799	513	237	750	5.549
1986	2.511	3.032	5.543	541	249	790	6.333
1987	2.865	3.614	6.479	557	263	820	7.299
1988	3.286	4.621	7.907	577	284	861	8.768
1989	3.721	5.654	9.375	594	308	902	10.277
1990	3.958	6.418	10.376	609	322	931	11.307
1991	4.270	7.209	11.479	617	341	958	12.437
1992	4.670	7.751	12.421	628	360	988	13.409
1993	5.141	9.696	14.837	654	382	1.036	15.873
1994	5.436	11.832	17.268	670	397	1.067	18.335
1995	6.051	15.771	21.822	695	419	1.114	22.936
1996	6.226	18.784	25.010	727	421	1.148	26.158
1997	6.651	21.070	27.721	751	426	1.177	28.898
1998	7.037	21.962	28.999	779	430	1.209	30.208
1999	7.262	22.920	30.182	800	430	1.230	31.412
2000	7.396	23.482	30.878	818	430	1.248	32.126
2001	7.565	24.154	31.719	829	431	1.260	32.979
2002	7.691	24.545	32.236	834	431	1.265	33.501
2003	7.841	24.916	32.757	835	431	1.266	34.023
2004	7.981	25.249	33.230	837	431	1.268	34.498
2005	8.084	25.649	33.733	840	432	1.272	35.005
2006	8.268	26.053	34.321	842	432	1.274	35.595


 IR A INDICE

ARTEFACTOS DE ALUMBRADO PÚBLICO

POTENCIA INSTALADA EN TRANSFORMADORES

Años	ARTEFACTOS DE ALUMBRADO PÚBLICO			POTENCIA INSTALADA EN TRANSFORMADORES		
	Artefactos de Alumbrado Público Capital (N°)	Artefactos de Alumbrado Público Interior (N°)	Total Artefactos de alumbrado Público (N°)	Potencia Instalada en Transformadores Capital (kVA)	Potencia Instalada en Transformadores Interior (kVA)	Potencia Instalada en Transformadores Total (kVA)
1983	20.043	16.370	36.413	213.927	185.916	399.843
1984	21.204	19.422	40.626	338.237	210.623	548.860
1985	21.660	22.323	43.983	369.722	249.209	618.931
1986	22.812	25.104	47.916	397.859	281.779	679.638
1987	23.447	27.140	50.587	436.676	327.169	763.845
1988	24.224	28.990	53.214	484.892	403.152	888.044
1989	24.544	29.548	54.092	552.173	527.369	1.079.542
1990	25.000	30.574	55.574	597.704	589.520	1.187.224
1991	25.826	31.219	57.045	635.611	639.582	1.275.193
1992	26.697	31.574	58.271	671.357	660.662	1.332.019
1993	28.087	32.699	60.786	714.264	721.890	1.436.154
1994	28.946	33.592	62.538	745.530	792.033	1.537.563
1995	31.761	35.218	66.979	809.968	902.674	1.712.642
1996	36.518	36.965	73.483	840.466	984.858	1.825.324
1997	41.690	38.188	79.878	888.892	1.052.400	1.941.292
1998	52.312	39.165	91.477	935.416	1.076.318	2.011.734
1999	54.813	39.810	94.623	965.528	1.113.802	2.079.330
2000	56.872	40.710	97.582	986.937	1.133.532	2.120.469
2001	59.913	41.987	101.900	1.006.102	1.161.401	2.167.503
2002	61.804	42.916	104.720	1.020.333	1.176.149	2.196.482
2003	62.541	44.004	106.545	1.033.539	1.189.126	2.222.665
2004	63.717	45.077	108.794	1.046.109	1.198.716	2.244.825
2005	65.947	46.712	112.659	1.056.865	1.215.111	2.271.976
2006	67.821	47.578	115.399	1.074.008	1.230.740	2.304.748

RECURSOS HUMANOS

PERSONAL AFECTADO DIRECTAMENTE A:

Años	Generación y Transmisión (N°)	Distribución y Comercialización (N°)	Administración y de Servicios (N°)	Total (N°)
1983	352	1.113	369	1.834
1984	363	1.202	400	1.965
1985	352	1.296	429	2.077
1986	412	1.395	463	2.270
1987	427	1.497	505	2.429
1988	466	1.577	547	2.590
1989	489	1.620	543	2.652
1990	501	1.440	563	2.504
1991	511	1.445	568	2.524
1992	561	1.401	571	2.533
1993	553	1.430	595	2.578
1994	545	1.458	600	2.603
1995	550	1.459	601	2.610
1996	566	1.492	624	2.682
1997	587	1.478	689	2.754
1998	847	1.531	610	2.988
1999	791	1.112	1.091	2.994
2000	782	1.138	1.072	2.992
2001	770	1.173	1.075	3.018
2002	791	1.197	1.102	3.090
2003	743	1.274	973	2.990
2004	729	1.541	846	3.116
2005	750	1.629	880	3.259
2006	757	1.646	889	3.292

 [IR A INDICE](#)**ENERGÍA VENDIDA POR PERSONA EMPLEADA**

Años	Personas Empleadas (N°)	Energía Vendida kWh	Energía vendida por Persona Empleada kWh
1983	1.834	846.937.882	461.798
1984	1.965	933.234.348	474.928
1985	2.077	1.031.969.616	496.856
1986	2.270	1.134.529.616	499.793
1987	2.429	1.457.853.661	600.187
1988	2.590	1.818.308.731	702.050
1989	2.652	1.867.202.635	704.073
1990	2.504	2.042.234.993	815.589
1991	2.524	2.175.214.257	861.812
1992	2.533	2.398.712.823	946.985
1993	2.578	2.757.928.982	1.069.794
1994	2.603	3.140.874.443	1.206.636
1995	2.610	3.601.265.161	1.379.795
1996	2.682	3.789.434.802	1.412.914
1997	2.754	3.970.932.628	1.441.878
1998	2.988	4.076.936.499	1.364.437
1999	2.994	4.812.374.699	1.607.340
2000	2.992	5.067.972.726	1.693.841
2001	3.018	5.138.684.847	1.702.679
2002	3.090	5.074.302.891	1.642.169
2003	2.990	4.932.154.199	1.649.550
2004	3.116	5.166.682.240	1.658.114
2005	3.259	5.157.001.688	1.582.388
2006	3.292	5.849.330.858	1.776.832

 **IR A INDICE****CLIENTES CONECTADOS SERVIDOS POR CADA EMPLEADO DE ANDE**

Años	Clientes (N°)	Personas Empleadas (N°)	Clientes servidos por cada Empleado de ANDE (N°)
1983	245.187	1.834	134
1984	262.141	1.965	133
1985	279.237	2.077	134
1986	304.064	2.270	134
1987	324.239	2.429	133
1988	346.807	2.590	134
1989	374.241	2.652	141
1990	406.419	2.504	162
1991	445.105	2.524	176
1992	491.153	2.533	194
1993	554.451	2.578	215
1994	622.984	2.603	239
1995	710.202	2.610	272
1996	783.712	2.682	292
1997	849.568	2.754	308
1998	900.121	2.988	301
1999	939.770	2.994	314
2000	963.815	2.992	322
2001	988.879	3.018	328
2002	1.011.228	3.090	327
2003	1.011.442	2.990	338
2004	1.038.752	3.116	333
2005	1.089.494	3.259	334
2006	1.144.720	3.292	348

 IR A INDICE**KM DE LÍNEAS EN SERVICIO POR CADA EMPLEADO DE ANDE**

Años	Personas Empleadas (N°)	Líneas en Servicio km	km de Líneas en Servicio por Persona Empleada km
1983	1.834	7.946,00	4,33
1984	1.965	8.914,10	4,54
1985	2.077	9.789,00	4,71
1986	2.270	12.821,00	5,65
1987	2.429	13.962,90	5,75
1988	2.590	15.167,70	5,86
1989	2.652	15.885,60	5,99
1990	2.504	17.348,90	6,93
1991	2.524	18.264,43	7,24
1992	2.533	20.544,20	8,11
1993	2.578	24.454,19	9,49
1994	2.603	24.046,00	9,24
1995	2.610	36.937,24	14,15
1996	2.682	43.544,74	16,24
1997	2.754	49.500,44	17,97
1998	2.988	52.355,90	17,52
1999	2.994	54.646,50	18,25
2000	2.992	56.295,70	18,82
2001	3.018	58.018,20	19,22
2002	3.090	58.920,65	19,07
2003	2.990	60.007,63	20,07
2004	3.116	60.719,53	19,49
2005	3.259	61.382,56	18,83
2006	3.292	62.329,89	18,93



OPERACIÓN DE LAS INSTALACIONES

ORIGEN DE LA ENERGÍA

(kWh)

Años		HIDRÁULICA				TÉRMICA		Total Origen de la Energía	
		Acaray	ITAIPÚ Sistema ANDE	Auxilio Mutuo	Yacyretá	Importación	Intercambio Recibido		Térmica
1983	Generado bruto	782.105.775	0	0	0	226.164.000	0	10.923.599	1.019.193.374
	Consumo Propio	1.447.208	0	0	0	510.012	0	1.092.310	3.049.530
	Generado neto	780.658.567	0	0	0	225.653.988	0	9.831.289	1.016.143.844
1984	Generado bruto	885.482.430	161.644.530	0	0	61.980.051	0	8.895.931	1.118.002.942
	Consumo Propio	2.180.381	0	0	0	177.349	0	372.933	2.730.663
	Generado neto	883.302.049	161.644.530	0	0	61.802.702	0	8.522.998	1.115.272.279
1985	Generado bruto	864.440.608	353.719.100	0	0	2.354.181	37.435.000	3.567.872	1.261.516.761
	Consumo Propio	2.557.025	0	0	0	48.116	0	107.036	2.712.177
	Generado neto	861.883.583	353.719.100	0	0	2.306.065	37.435.000	3.460.836	1.258.804.584
1986	Generado bruto	800.869.844	584.077.721	0	0	1.824.960	253.691.989	3.899.640	1.644.364.154
	Consumo Propio	2.651.954	0	0	0	54.748	0	116.939	2.823.641
	Generado neto	798.217.890	584.077.721	0	0	1.770.212	253.691.989	3.782.701	1.641.540.513
1987	Generado bruto	617.684.887	1.004.145.282	0	0	2.128.888	110.393.228	3.736.084	1.738.088.369
	Consumo Propio	2.152.234	0	0	0	63.866	0	112.080	2.328.180
	Generado neto	615.532.653	1.004.145.282	0	0	2.065.022	110.393.228	3.624.004	1.735.760.189

Años		HIDRÁULICA					TÉRMICA		Total Origen de la Energía
		Acaray	ITAIPÚ		Yacyretá	Importación	Intercambio Recibido	Térmica	
			Sistema ANDE	Auxilio Mutuo					
1988	Generado bruto	676.055.325	1.270.682.000	0	0	2.638.155	144.128.000	3.794.516	2.097.297.996
	Consumo Propio	1.788.008	0	0	0	32.333	0	113.834	1.934.175
	Generado neto	674.267.317	1.270.682.000	0	0	2.605.822	144.128.000	3.680.682	2.095.363.821
1989	Generado bruto	688.418.552	1.508.903.000	0	0	2.633.601	0	4.166.020	2.204.121.173
	Consumo Propio	1.942.295	0	0	0	0	0	124.981	2.067.276
	Generado neto	686.476.257	1.508.903.000	0	0	2.633.601	0	4.041.039	2.202.053.897
1990	Generado bruto	608.228.815	1.740.593.268	0	0	2.615.910	45.886.886	4.542.879	2.401.867.758
	Consumo Propio	2.033.793	0	0	0	0	0	136.286	2.170.079
	Generado neto	606.195.022	1.740.593.268	0	0	2.615.910	45.886.886	4.406.593	2.399.697.679
1991	Generado bruto	559.579.896	1.956.020.060	0	0	54.885	54.000.113	4.919.090	2.574.574.044
	Consumo Propio	2.394.500	0	0	0	0	0	147.573	2.542.073
	Generado neto	557.185.396	1.956.020.060	0	0	54.885	54.000.113	4.771.517	2.572.031.971
1992	Generado bruto	977.639.608	1.860.188.215	0	0	70.926	773.584	3.512.906	2.842.185.239
	Consumo Propio	2.256.000	0	0	0	0	0	105.387	2.361.387
	Generado neto	975.383.608	1.860.188.215	0	0	70.926	773.584	3.407.519	2.839.823.852
1993	Generado bruto	908.527.421	2.356.310.611	0	0	63.978	720.456	2.994.574	3.268.617.040
	Consumo Propio	2.091.999	0	0	0	0	0	89.837	2.181.836
	Generado neto	906.435.422	2.356.310.611	0	0	63.978	720.456	2.904.737	3.266.435.204
1994	Generado bruto	978.817.331	2.821.458.861	0	0	4.140	559.602	2.008.135	3.802.848.069
	Consumo Propio	2.018.166	0	0	0	0	0	60.244	2.078.410
	Generado neto	976.799.165	2.821.458.861	0	0	4.140	559.602	1.947.891	3.800.769.659

Años		HIDRÁULICA					TÉRMICA		Total Origen de la Energía
		Acaray	ITAIPÚ		Yacyretá	Importación	Intercambio Recibido	Térmica	
			Sistema ANDE	Auxilio Mutuo					
1995	Generado bruto	1.106.108.653	3.254.288.267	0	0	31.791	449.252	2.437.397	4.363.315.360
	Consumo Propio	1.792.550	0	0	0	0	0	73.124	1.865.674
	Generado neto	1.104.316.103	3.254.288.267	0	0	31.791	449.252	2.364.273	4.361.449.686
1996	Generado bruto	744.497.088	3.987.524.160	0	6.306.000	11.449	136.601	2.591.557	4.741.066.855
	Consumo Propio	1.547.115	0	0	0	0	0	77.747	1.624.862
	Generado neto	742.949.973	3.987.524.160	0	6.306.000	11.449	136.601	2.513.810	4.739.441.993
1997	Generado bruto	1.010.519.233	3.953.287.783	0	185.306.200	212.515	1.680	3.067.829	5.152.395.240
	Consumo Propio	1.553.006	0	0	0	0	0	91.806	1.644.812
	Generado neto	1.008.966.227	3.953.287.783	0	185.306.200	212.515	1.680	2.976.023	5.150.750.428
1998	Generado bruto	1.125.839.086	4.129.263.685	93.514.000	116.405.600	0	0	3.189.738	5.468.212.109
	Consumo Propio	1.596.003	0	0	0	0	0	95.691	1.691.694
	Generado neto	1.124.243.083	4.129.263.685	93.514.000	116.405.600	0	0	3.094.047	5.466.520.415
1999	Generado bruto	1.060.502.652	5.013.159.873	93.494.000	45.806.800	41.000	0	3.180.789	6.216.185.114
	Consumo Propio	1.600.000	0	0	0	0	0	95.425	1.695.425
	Generado neto	1.058.902.652	5.013.159.873	93.494.000	45.806.800	41.000	0	3.085.364	6.214.489.689
2000	Generado bruto	1.044.636.306	5.425.066.428	98.109.865	30.320.800	0	0	842.144	6.598.975.543
	Consumo propio	1.612.002	0	0	0	0	0	25.266	1.637.268
	Generado neto	1.043.024.304	5.425.066.428	98.109.865	30.320.800	0	0	816.878	6.597.338.275
2001	Generado bruto	948.118.161	5.563.184.203	---	86.407.700	10.952	0	486.714	6.598.207.730
	Consumo propio	1.596.005	0	0	0	0	0	16.830	1.612.835
	Generado neto	946.522.156	5.563.184.203	---	86.407.700	10.952	0	469.884	6.596.594.895
2002	Generado bruto	1.076.380.006	5.747.350.359	---	48.818.700	16.700	0	514.460	6.873.080.225
	Consumo propio	2.057.475	0	0	0	0	0	15.432	2.072.907
	Generado neto	1.074.322.531	5.747.350.359	---	48.818.700	16.700	0	499.028	6.871.007.318

Departamento de Estadísticas			Compilación Estadísticas					Operación/saff	
2003(*)	Generado bruto	1.017.422.873	5.741.695.189	---	100.230.900	12.390	0	495.297	6.859.856.649
	Consumo propio	2.563.773	0	0	0	0	0	14.857	2.578.630
	Generado neto	1.014.859.100	5.741.695.189	---	100.230.900	12.390	0	480.440	6.857.278.019
2004(*)	Generado bruto	931.661.225	6.363.534.842	---	153.418.400	17.455	0	499.850	7.449.131.772
	Consumo propio	2.089.027	0	0	0	0	0	14.995	2.104.022
	Generado neto	929.572.198	6.363.534.842	---	153.418.400	17.455	0	484.855	7.447.027.750
2005(*)	Generado bruto	765.386.226	6.571.380.837	---	292.286.000	2.211.248	0	645.888	7.631.910.199
(**)	Consumo propio	1.616.393	0	0	0	0	0	19.377	1.635.770
	Generado neto	763.769.833	6.571.380.837	---	292.286.000	2.211.248	0	626.511	7.630.274.429
2006(*)	Generado bruto	801.205.610	7.366.157.949	---	413.148.640	644.634	0	766.196	8.581.923.029
(**)	Consumo propio	1.817.256	0	0	0	0	0	22.986	1.840.242
	Generado neto	799.388.354	7.366.157.949	---	413.148.640	644.634	0	743.210	8.580.082.787

(*)En el Item Yacyreta Incluye:Yacyretá + (Energía de Paso para Ebisa).

(**) En el Item Importación Incluye: Enersul + Copel